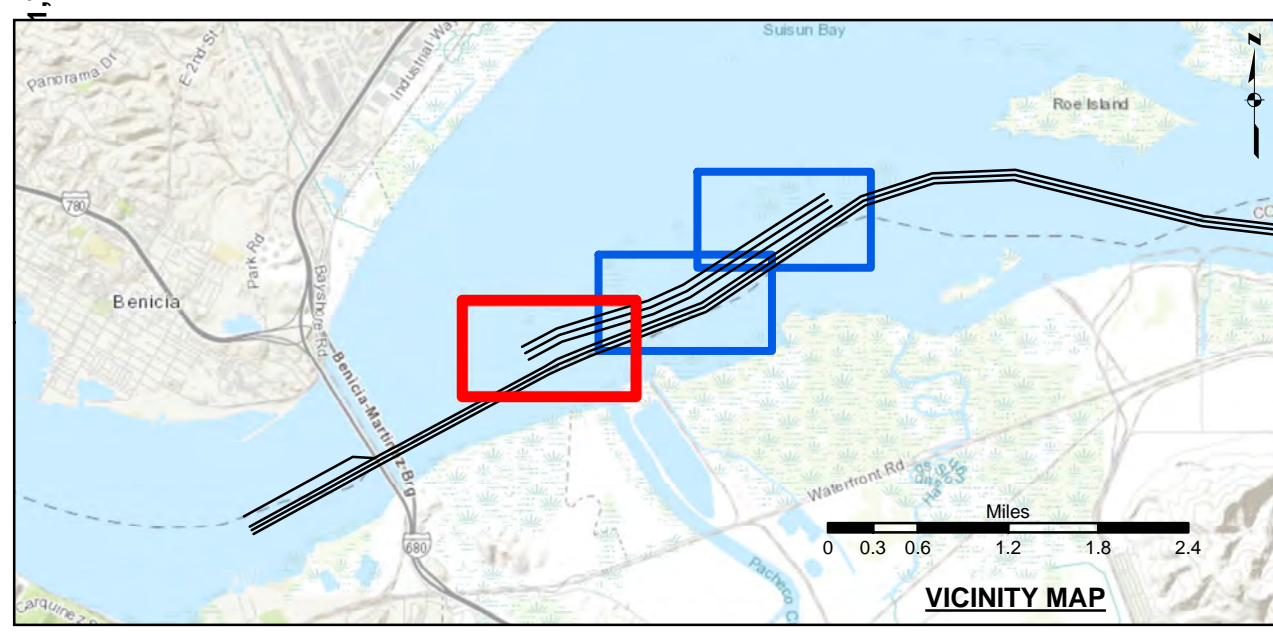
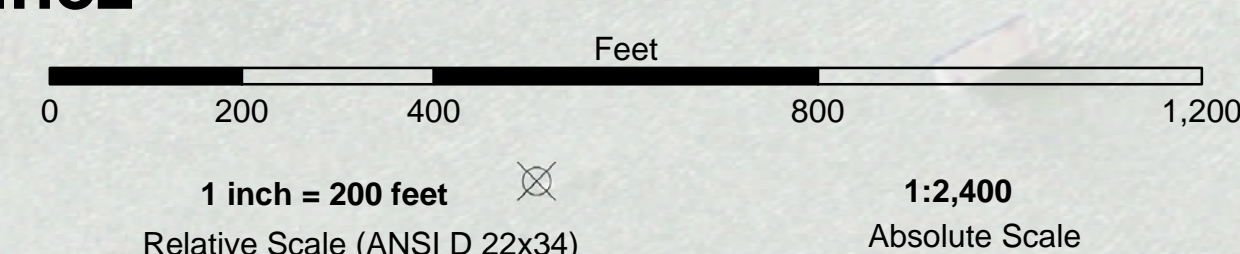


**PRELIMINARY ISSUE**  
THIS PLAN ISSUED FOR  
ADVANCE INFORMATION ONLY

FLOOD →  
← EBB

**Martinez**



- |                            |                    |                 |
|----------------------------|--------------------|-----------------|
| Federal Navigation Channel | Beacon, General    | <b>Contours</b> |
| Shoaling Area              | Obstruction Point  |                 |
| Placement Area             | Navigation Buoy    |                 |
| Anchorage Area             | Navigation Buoy    |                 |
| Wreck Area                 | Shoalest Sounding* |                 |
| Submerged Wreck            |                    | -35             |
| Angle Point                |                    | -34             |
|                            |                    | -33             |
|                            |                    | -32             |
|                            |                    | -31             |

NOTES:  
HORIZONTAL COORDINATE SYSTEM:  
NORTH AMERICAN DATUM OF 1983 (NAD83), PROJECTED TO THE STATE PLANE COORDINATE SYSTEM (SPCS), CALIFORNIA ZONE II. DISTANCE UNITS IN U.S. SURVEY FEET.  
VERTICAL DATUM:  
SOUNDINGS ARE SHOWN IN FEET AND INDICATE DEPTHS BELOW MEAN LOWER LOW WATER.  
THE INFORMATION DEPICTED ON THIS MAP REPRESENTS THE RESULTS OF A SURVEY CONDUCTED ON THE DATE INDICATED AND CAN ONLY BE CONSIDERED TO REPRESENT THE GENERAL CONDITION EXISTING AT THAT TIME.  
PLANE GRID, BEARING AND COORDINATES ARE BASED ON THE STATE OF CALIFORNIA COORDINATE SYSTEM, LAMBERT CONFORMAL PROJECTION, ZONE II NAD 83, CALIFORNIA, AS DESCRIBED IN SPECIAL PUBLICATION NO. 235, PUBLISHED BY NATIONAL OCEAN SURVEY, BASE MAPS ARE USDA NAIP 2010.  
\*SHOALEST SOUNDING PER QUARTER PER REACH  
DRAWING NOT TO BE USED FOR NAVIGATION, ONLY CHANNEL CONDITION AT DATE OF SURVEY.  
THE LOCATION OF ALL NAVIGATION AIDS ARE BASED ON INFORMATION PROVIDED BY THE U.S. COAST GUARD. BUOY LOCATIONS REPRESENT THE POSITION OF THE SINKER ONLY.

SURVEYED BY THE CORPS OF ENGINEERS.  
SOUNDINGS WERE TAKEN BY FATHOMETER AND ARE SHOWN TO THE NEAREST TENTH OF A FOOT. SOUNDINGS ARE BASED ON THE DATUM OF MEAN LOWER LOW WATER AT THE LOCALITY, NAVD 88.  
THE PROJECT DEPTH IS 35 FEET.  
VERTICAL CONTROL:  
SUISUN BAY CHANNEL  
(LINES 00+00 TO 160+00) BENCHMARK "9" (1948), USC&GS DISK ELEV 14.875 FT MLLW, NAVD 88 DATUM, TIDE GAUGE LOCATED AT PORT OF BENICIA DOCK.  
(LINES 150+00 TO 500+00) BENCHMARK "5144-P" (1990 RESET 1997), (LINES 500+00 TO 860+00) BENCHMARK "5144-P" (1990 RESET 1997), USC&GS DISK ELEV 11.83 FT MLLW, NAVD 88 DATUM, TIDE GAUGE LOCATED AT CONCORD NAVAL WEAPONS STATION TUG DOCK, NOAA STATION.  
(LINES 860+00 TO 733+45) BENCHMARK "5096-B", USC&GS DISK ELEV 21.76 FT MLLW, NAVD 88 DATUM, TIDE GAUGE LOCATED AT DIABLO SERVICE DOCK.  
HORIZONTAL GPS CONTROL: COAST GUARD D-BEACON

**US Army Corps of Engineers**  
San Francisco District  
1455 Market Street  
San Francisco, CA 94103

**DISCLAIMER**  
The United States Government furnishes this information for the purpose of providing accurate and reliable data for the information, use, and the data furnished. The United States Government makes no warranty, expressed or implied, concerning the accuracy, completeness, or timeliness of the information, use, and the data furnished. The user is responsible for the results of any application of the data for other than its intended purpose. These data belong to the Government. Therefore, the recipient may not transfer these data to others without also transferring this disclaimer.

Prepared Under the Direction of	Chart Date:	Jul 12, 2018
LT COLONEL C.E. DISTRICT ENGINEER	Designed by:	
Submitted:	Plotted By:	PDT
Hydro Survey Team Leader	Checked By:	PDT
Recommended:	Drawn by:	PDT
Chief, Hydro Survey Section	Approved:	
Chief, Construction Branch		

CALIFORNIA  
**SUISUN BAY CHANNEL**  
DISPOSAL SITE - SF 16  
CONDITION SURVEY  
03 JULY 2018

**Sheet Reference Number**  
1 of 3

**PRELIMINARY ISSUE**  
THIS PLAN ISSUED FOR  
ADVANCE INFORMATION ONLY

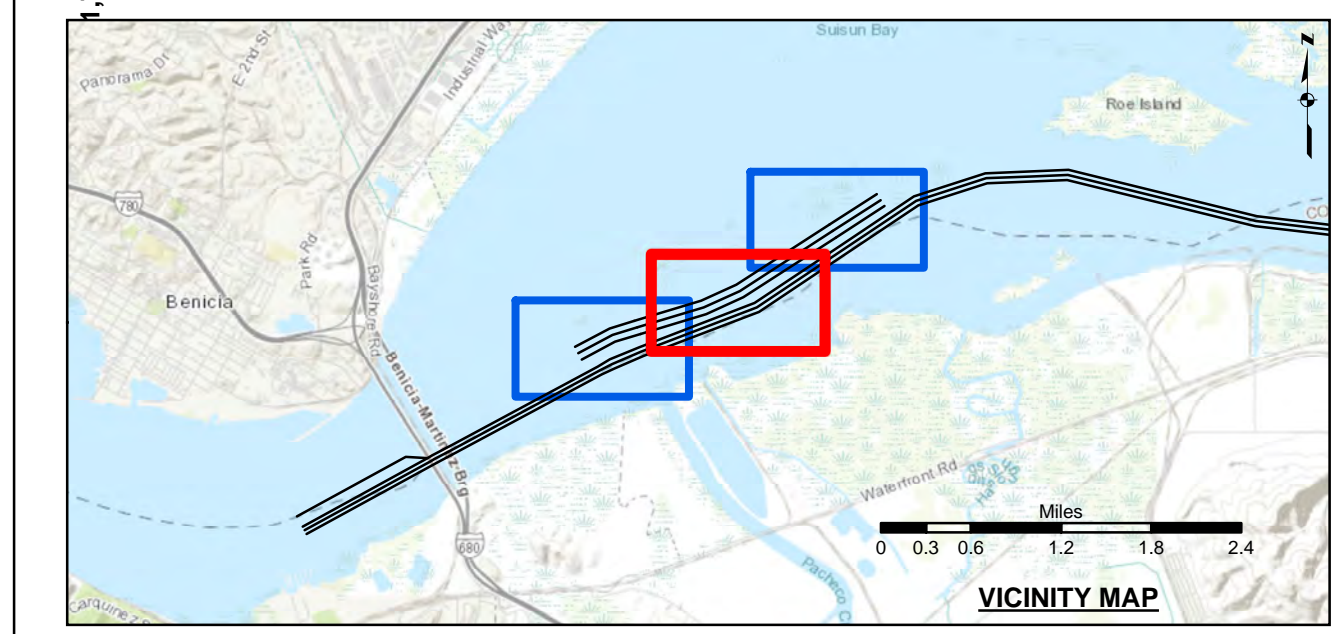
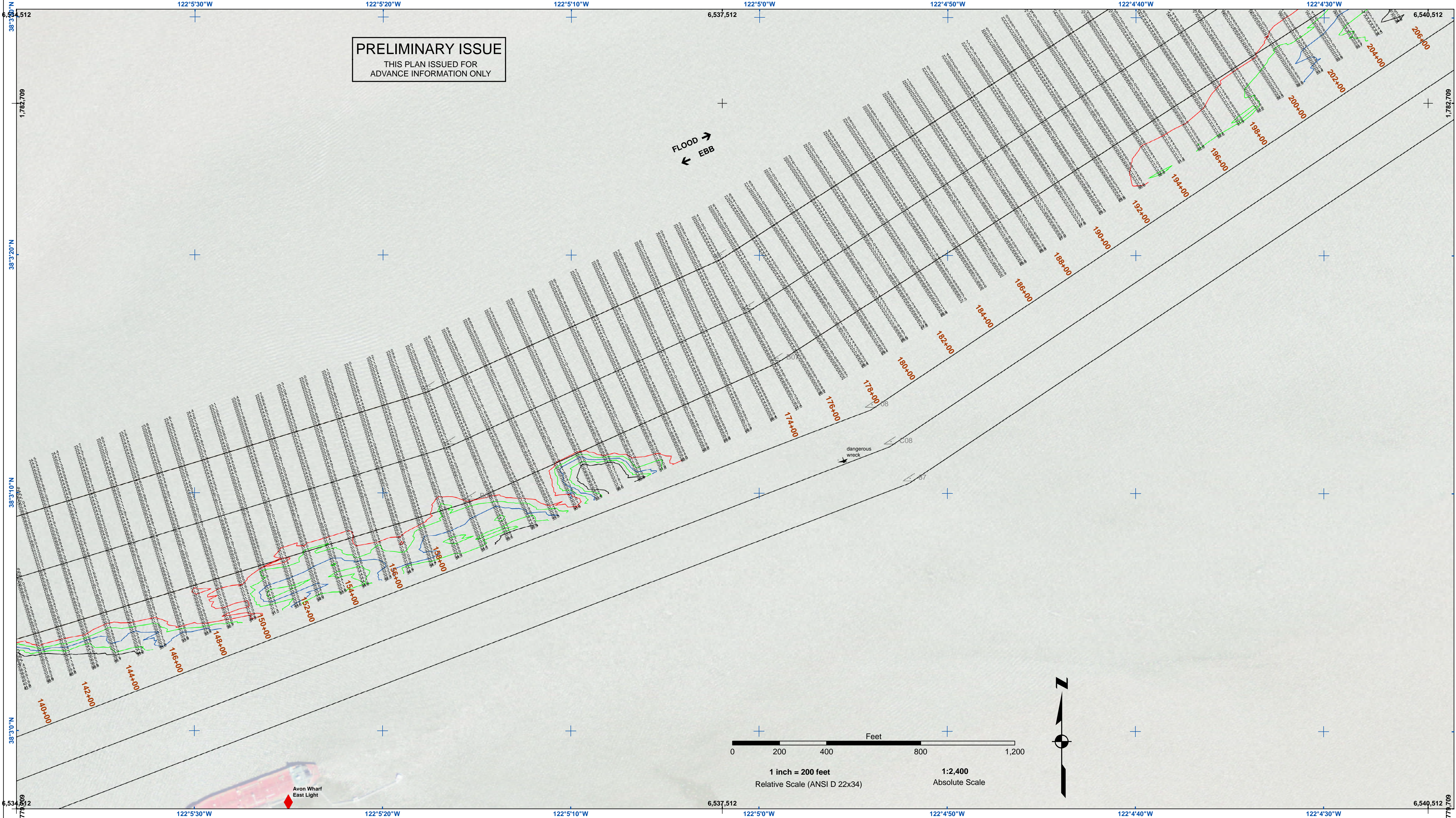
**US Army Corps of Engineers**  
San Francisco District  
1455 Market Street  
San Francisco, CA 94103

**DISCLAIMER**  
The United States Government furnishes this information for the purpose of providing advance information only. The user is responsible for the results of any application of the data for other than its intended purpose. The United States Government makes no warranty, expressed or implied, concerning the accuracy, completeness, or reliability of the information furnished. The United States Government shall not be liable for any damages, including those resulting from the use of the information, or for any loss of profit or other financial loss, or for any other damages, arising from the use of the information. These data belong to the Government. Therefore, the recipient may not transfer these data to others without also transferring this disclaimer.

Prepared Under the Direction of	Chart Date:
LT. COLONEL J. RAYFIELD	Jul 12, 2018
Subproject:	Designed by:
Hydro Survey Team Leader	PDT
Recommended:	Checked by:
Chief, Hydro Survey Section	PDT
Approved:	Drawn by:
Chief, Construction Branch	PDT

CALIFORNIA  
CONTRA COSTA COUNTY  
**SUISUN BAY CHANNEL**  
DISPOSAL SITE - SF 16  
CONDITION SURVEY  
03 JULY 2018

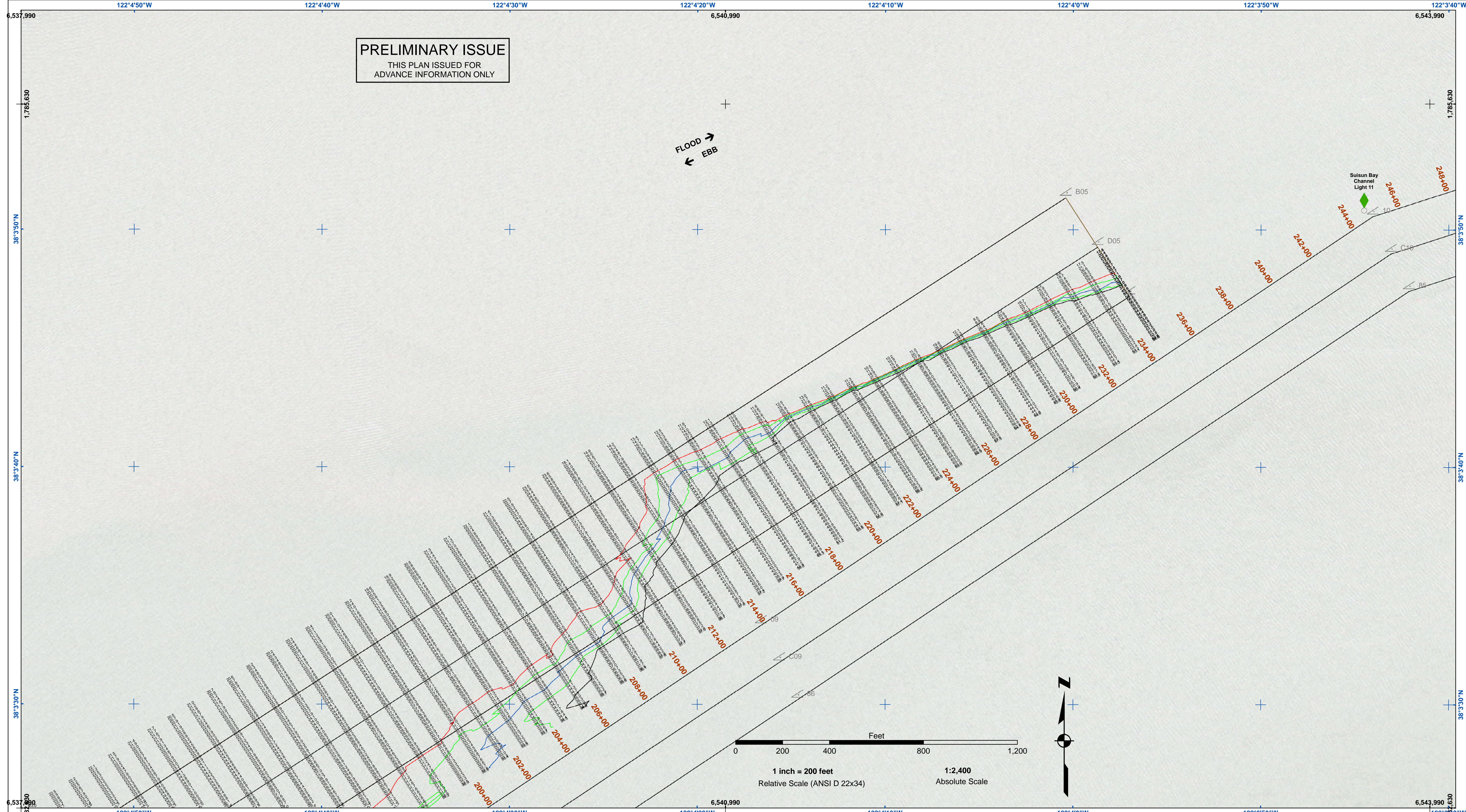
**Sheet Reference Number**  
2 of 3



- |                            |                    |                 |
|----------------------------|--------------------|-----------------|
| Federal Navigation Channel | Beacon, General    | <b>Contours</b> |
| Shoaling Area              | Obstruction Point  |                 |
| Placement Area             | Navigation Buoy    |                 |
| Anchorage Area             | Navigation Buoy    |                 |
| Wreck Area                 | Shoalest Sounding* |                 |
| Submerged Wreck            |                    | -35             |
| Angle Point                |                    | -34             |
|                            |                    | -33             |
|                            |                    | -32             |
|                            |                    | -31             |

**NOTES:**  
HORIZONTAL COORDINATE SYSTEM:  
NORTH AMERICAN DATUM OF 1983 (NAD83), PROJECTED TO THE STATE PLANE COORDINATE SYSTEM (SPCS), CALIFORNIA ZONE II. DISTANCE UNITS IN U.S. SURVEY FEET.  
VERTICAL DATUM:  
SOUNDINGS ARE SHOWN IN FEET AND INDICATE DEPTHS BELOW MEAN LOWER LOW WATER.  
THE INFORMATION DEPICTED ON THIS MAP REPRESENTS THE RESULTS OF A SURVEY CONDUCTED ON THE DATE INDICATED AND CAN ONLY BE CONSIDERED TO REPRESENT THE GENERAL CONDITION EXISTING AT THAT TIME.  
PLANE GRID, BEARING AND COORDINATES ARE BASED ON THE STATE OF CALIFORNIA COORDINATE SYSTEM, LAMBERT CONFORMAL PROJECTION, ZONE II NAD 83, CALIFORNIA, AS DESCRIBED IN SPECIAL PUBLICATION NO. 235, PUBLISHED BY NATIONAL OCEAN SURVEY, BASE MAPS ARE USDA NAIP 2010.  
\*SHOALEST SOUNDING PER QUARTER PER REACH  
DRAWING NOT TO BE USED FOR NAVIGATION, ONLY CHANNEL CONDITION AT DATE OF SURVEY. THE LOCATION OF ALL NAVIGATION AIDS ARE BASED ON INFORMATION PROVIDED BY THE U.S. COAST GUARD. BUOY LOCATIONS REPRESENT THE POSITION OF THE SINKER ONLY.

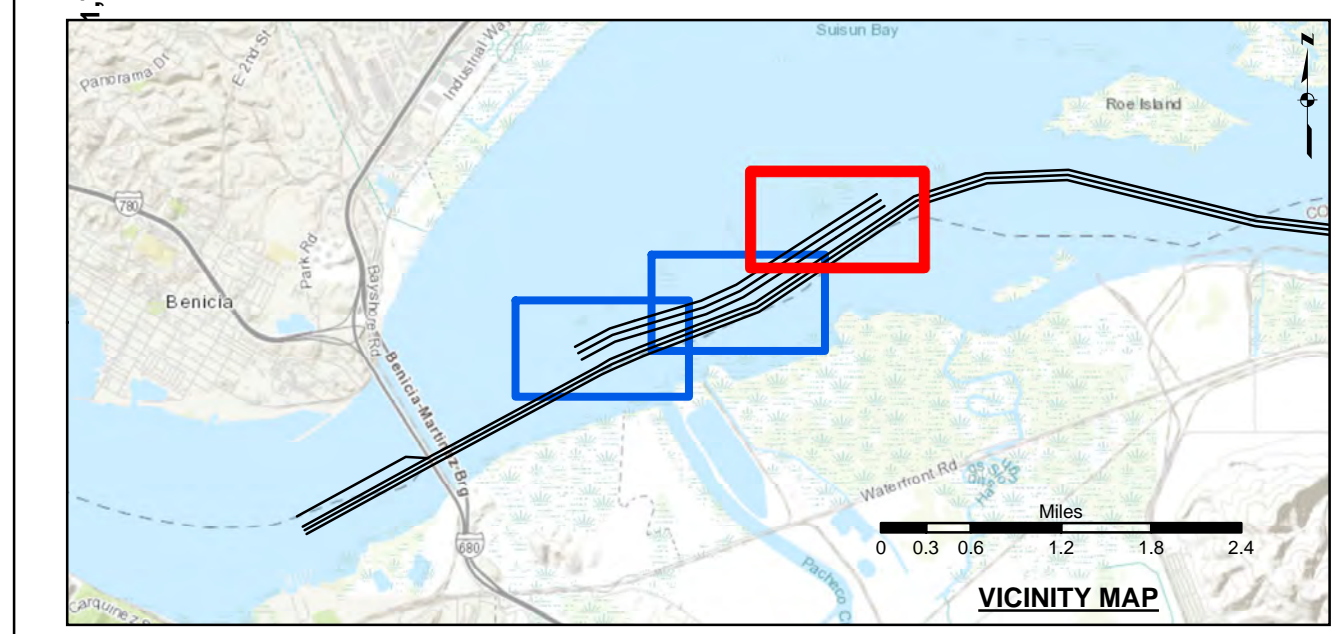
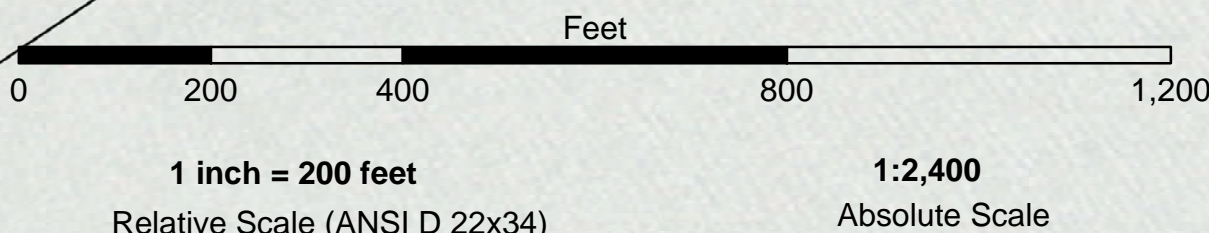
SURVEYED BY THE CORPS OF ENGINEERS.  
SOUNDINGS WERE TAKEN BY FATHOMETER AND ARE SHOWN TO THE NEAREST TENTH OF A FOOT. SOUNDINGS ARE BASED ON THE DATUM OF MEAN LOWER LOW WATER AT THE LOCALITY, NAVD 88.  
THE PROJECT DEPTH IS 35 FEET.  
VERTICAL CONTROL:  
SUISUN BAY CHANNEL  
(LINES 00+00 TO 160+00) BENCHMARK "9" (1948), USC&GS DISK ELEV 14.875 FT MLLW, NAVD 88 DATUM, TIDE GAUGE LOCATED AT PORT OF BENICIA DOCK.  
(LINES 150+00 TO 500+00) BENCHMARK "5144-P" (1990 RESET 1997), USC&GS DISK ELEV 11.83 FT MLLW, NAVD 88 DATUM, TIDE GAUGE LOCATED AT CONCORD NAVAL WEAPONS STATION TUG DOCK, NOAA STATION.  
(LINES 660+00 TO 733+45) BENCHMARK "5096-B", USC&GS DISK ELEV 21.76 FT MLLW, NAVD 88 DATUM, TIDE GAUGE LOCATED AT DIABLO SERVICE DOCK.  
HORIZONTAL GPS CONTROL: COAST GUARD D-BEACON



**PRELIMINARY ISSUE**  
THIS PLAN ISSUED FOR  
ADVANCE INFORMATION ONLY

FLOOD →  
← EBB

Suisun Bay  
Channel  
Light 11



Federal Navigation Channel	Beacon, General	<b>Contours</b>
Shoaling Area	Obstruction Point	
Placement Area	Navigation Buoy	
Anchorage Area	Navigation Buoy	
Wreck Area	Shoalest Sounding*	
Submerged Wreck		-35
Angle Point		-34
		-33
		-32
		-31

NOTES:  
HORIZONTAL COORDINATE SYSTEM:  
NORTH AMERICAN DATUM OF 1983 (NAD83), PROJECTED TO THE STATE PLANE COORDINATE SYSTEM (SPCS), CALIFORNIA ZONE II. DISTANCE UNITS IN U.S. SURVEY FEET.  
VERTICAL DATUM:  
SOUNDINGS ARE SHOWN IN FEET AND INDICATE DEPTHS BELOW MEAN LOWER LOW WATER.  
THE INFORMATION DEPICTED ON THIS MAP REPRESENTS THE RESULTS OF A SURVEY CONDUCTED ON THE DATE INDICATED AND CAN ONLY BE CONSIDERED TO REPRESENT THE GENERAL CONDITION EXISTING AT THAT TIME.  
PLANE GRID, BEARING AND COORDINATES ARE BASED ON THE STATE OF CALIFORNIA COORDINATE SYSTEM, LAMBERT CONFORMAL PROJECTION, ZONE II NAD 83, CALIFORNIA, AS DESCRIBED IN SPECIAL PUBLICATION NO. 235, PUBLISHED BY NATIONAL OCEAN SURVEY.  
BASE MAPS ARE USDA NAIP 2010.  
\*SHOALEST SOUNDING PER QUARTER PER REACH  
DRAWING NOT TO BE USED FOR NAVIGATION, ONLY CHANNEL CONDITION AT DATE OF SURVEY.  
THE LOCATION OF ALL NAVIGATION AIDS ARE BASED ON INFORMATION PROVIDED BY THE U.S. COAST GUARD. BUOY LOCATIONS REPRESENT THE POSITION OF THE SINKER ONLY.

SURVEYED BY THE CORPS OF ENGINEERS.  
SOUNDINGS WERE TAKEN BY FATHOMETER AND ARE SHOWN TO THE NEAREST TENTH OF A FOOT. SOUNDINGS ARE BASED ON THE DATUM OF MEAN LOWER LOW WATER AT THE LOCALITY, NAVD 88.  
THE PROJECT DEPTH IS 35 FEET.  
VERTICAL CONTROL:  
SUISUN BAY CHANNEL  
(LINES 00+00 TO 160+00) BENCHMARK "9" (1948), USC&GS DISK ELEV 14.875 FT MLLW, NAVD 88 DATUM, TIDE GAUGE LOCATED AT PORT OF BENICIA DOCK.  
(LINES 150+00 TO 500+00) BENCHMARK "5144-P" (1990 RESET 1997), USC&GS DISK ELEV 11.83 FT MLLW, NAVD 88 DATUM, TIDE GAUGE LOCATED AT CONCORD NAVAL WEAPONS STATION TUG DOCK, NOAA STATION.  
(LINES 660+00 TO 733+45) BENCHMARK "5096-B", USC&GS DISK ELEV 21.76 FT MLLW, NAVD 88 DATUM, TIDE GAUGE LOCATED AT DIABLO SERVICE DOCK.  
HORIZONTAL GPS CONTROL: COAST GUARD D-BEACON

US Army Corps  
of Engineers  
San Francisco District  
1455 Market Street  
San Francisco, CA 94103

**DISCLAIMER**  
The United States Government furnishes the information, data, and materials contained herein for the use of the recipient for the purpose of the project for which they were provided. The United States Government makes no warranty, expressed or implied, concerning the accuracy, completeness, or reliability of the information, data, and materials furnished. The United States Government is not responsible for the results of any application of the data for other than its intended purpose.  
Distribution Liability: The data represents the results of data collection and processing activities and does not constitute an engineering activity and indicates the general existing conditions. As such, it is only valid for its intended use, content, time and accuracy specifications. The user is responsible for the results of any application of the data for other than its intended purpose.  
These data belong to the Government. Therefore the recipient may not transfer these data to others without also transferring this disclaimer.

Prepared Under the Direction of <b>TRAVIS J. RAYFIELD</b> LT. COLONEL, C.E., DISTRICT ENGINEER	Chart Date: Jul 12, 2018
Submitted: Hydro Survey Team Leader	Designed by: PDT
Recommended: Chief, Hydro Survey Section	Checked by: PDT
Approved: Chief, Construction Branch	Drawn by: PDT

CALIFORNIA  
**SUISUN BAY CHANNEL**  
DISPOSAL SITE - SF 16  
CONDITION SURVEY  
03 JULY 2018

**Sheet Reference Number**  
3 of 3